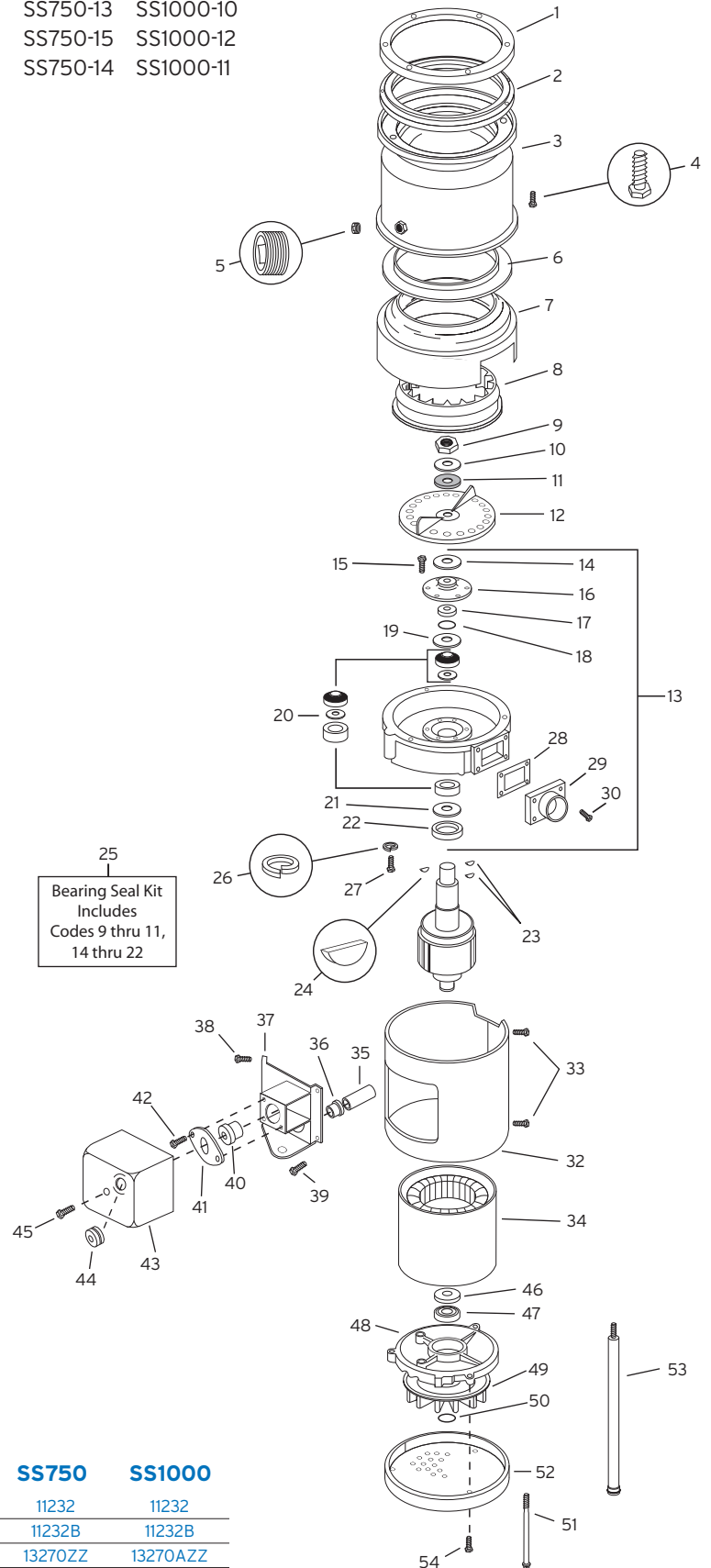


Standard UL	SS300-25	SS500-28	SS750-13	SS1000-10
Short Body UL	SS300-27	SS500-30	SS750-15	SS1000-12
CSA Approved	SS300-26	SS500-29	SS750-14	SS1000-11

CODE #	DESCRIPTION	QTY	PART NUMBER
1	Mounting Flange	1	11004
2	Mounting Gasket	1	11016
3a,3b	Upper Body Assy	1	See Chart "A"
4	Mounting Screw	6	1491
5	Pipe Plug	1	11227
6	Shredder Gasket	1	11008
7	Body & Cover Assy	1	11725ZZ
8	Stationary Shredder	1	14662
9	Nut	1	11255
10	Washer	1	11256
11	Fiber Washer	1	12143
12	Rotating Shredder Assy	1	13273ZZ
13	Upper End Bell Assy (14-22)	1	13320
14	Shield	1	13266
15	Screw	12	1269
16	Seal Assy	1	13260
17	Spacer Sleeve	1	13265
18	O-Ring	1	12859
19	Slinger	1	11729
20	Upper Bearing Assy	1	12638
21	Thrust Washer	1	11821
22	Water & Oil Seal	1	13398
23	Woodruff Key	2	11320
24	Woodruff Key	1	11322
25	Bearing Seal Kit (9-11 & 14-22)	1	13281A
26	Lock Washer	6	11444
27	Screw	6	11524
28	Tailpipe Gasket	1	11457
29	Tailpipe Flange	1	13998
30	Screw	4	3130
31	Rotor & Shaft Assy	2	See Chart "A"
32	Trim Band	1	11721ZZ
33	Screw	2	1836A
34	Stator Assy	1	See Chart "A"
35	Insulation Tubing	1	12357ZZ
36	Bushing	1	12384
37	Bracket	1	See Chart "A"
38	Screw (8-18 x 1/4)	4	11448
39	Ground Screw	1	2466A
40	Overload Protector	1	See Chart "A"
41	Overload Clamp	1	12378
42	Screw	2	01836A
43	Terminal Box Assy	1	13396ZZ
44	Overload Grommet	1	12383
45	Screw	1	12381
46	Bearing	1	12415
47	Spring Washer	1	13678
48	Lower End Frame	1	11672
49	Fan	1	12395
50	Retaining Ring	1	12635
51	Thru Bolt	4	8039
52	Bottom Cover	1	11748
53	Foot Tube Assy	3	11757A
54	Screw	3	8221



25
Bearing Seal Kit
Includes
Codes 9 thru 11,
14 thru 22

CODE #	DESCRIPTION	QTY	SS300	SS500	SS750	SS1000
3a	Upper Body Assy (Std)	1	11232	11232	11232	11232
3b	Upper Body Assy (Short)	1	11232B	11232B	11232B	11232B
31	Rotor & Shaft Assy	1	13270ZZ	13270AZZ	13270ZZ	13270AZZ
34	Stator Assy	1	13079	13079A	13079B	13079C
37	Bracket	1	12433AZZ	12433BZZ	12433BZZ	12433BZZ
40	Overload Protector	1	13422AW	13422B	13422AC	13422AC

(A)

